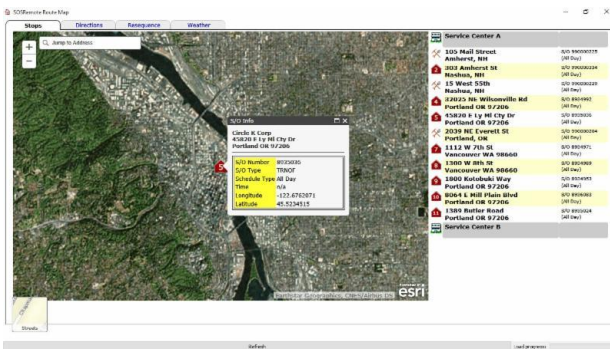


SOSMobile It's All About the Maps

SOSDispatch, one of the modules comprising the *SOSMobile* suite, gives dispatchers the ability to view and assign orders from any mapping application. And our *SOSRemote* module allows field workers to view their route map, get driving directions and even create new orders via the map.

This month's issue focuses on just a few of our many mapping features - all easily implemented.

View Orders/Stops on Esri Map

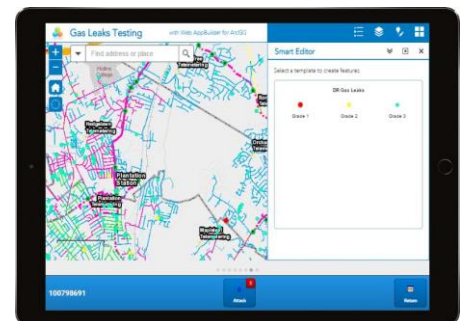


Field techs and dispatchers can view assigned orders using any mapping application, including Esri's ArcGIS. Orders will appear as another layer on the map. Utilities may even choose to "mix-and-match" mapping applications. For instance, using Esri to view the orders and Google Maps for driving directions.

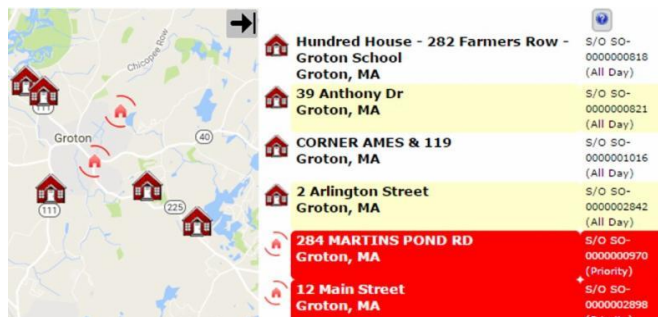
Esri map for stops this generic map would be populated with your utility's layers.

And taking it one step further we can embed your GIS map into our Closing Wizards for certain order types. This allows users to update GIS assets within the *SOSRemote* application, streamlining the entire workflow process.

Contact us to find out how easily we can change the way you view!



ArcGIS Map embedded in *SOSRemote* Closing Wizard (iOS/Android version)



SOSRemote Stops Tab Map

Toggle the Sidebar

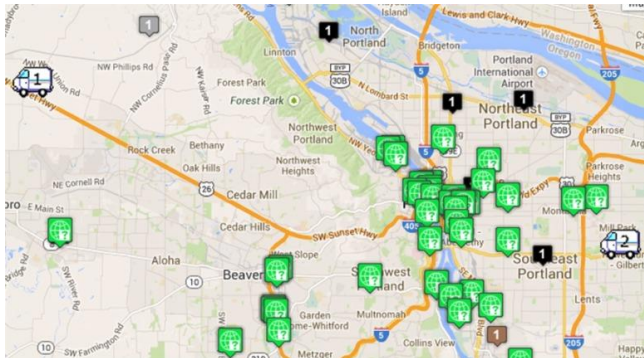
In the latest Windows version of *SOSRemote*, a toggle sidebar arrow appears in the upper right-hand corner of the Stops Tab map. This gives the user the ability to hide the Stops List sidebar, gaining more map "real estate".

Missing Geo-Coordinates?

SOSMobile can be set to notify the tech if an assigned order does not have associated longitude/latitude coordinates. Coordinates can then be captured at the site by using the "Mark Location" feature available in *SOSRemote*, and subsequently uploaded to a Utility's CIS.



Track Locations with No GPS Antenna



Devices appear as truck icons on the dispatch map

If your Utility is using *SOSRemote* on laptops with no built-in GPS, we can still track the device location using the browser's geolocation API. This may eliminate the need for separate GPS dongles.

Just one less piece of equipment to worry about!



About InsightAtlas

InsightAtlas has helped utilities save money and increase productivity through field force automation since 1999. Our *SOSMobile* software provides intelligent scheduling, mobile dispatch and real-time updates to and from the field, affordably automating a utility's entire mobile workforce. As integration experts, *SOSMobile* is designed to capture and update orders and data from multiple sources, including its own database. This gives field personnel access to all needed information, and the office the tools to effectively manage field resources.

(ORIGINALLY SENT AS CONSTANT CONTACT EMAIL IN DECEMBER 2016.)