

**In This Issue**

[New Year's Resolution](#)

[Product Info](#)

[Client News](#)

[Out and About](#)

**AT A GLANCE**

**New Product Literature**

Download the latest [Product Literature](#) for details on the entire **SOSMobile** suite of software.

**Video Demo**

See a video demo of **SOSMobile** on YouTube.



**Product Overview**

Check out our two minute **SOSMobile** commercial on YouTube.



**New Year's Resolution Time!**



**Enhance Your Green Initiative with SOSMobile**

Is 2014 your year to further support your green workplace initiative? Utilities have already seen the benefits of paperless billing—with **SOSMobile** you can achieve the next step and go green with your work and service orders.

Studies show that mobile workforce automation is one of the clearest ways for a utility to drive up efficiencies and save money.

[Contact us](#) to see how easily you can achieve your goals with **SOSMobile**.

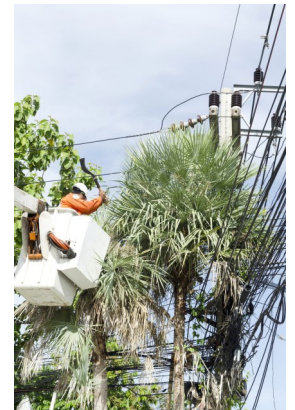
**Product Info**

**SOSRemote Automates Metered Services and More**

**SOSRemote**, one of the software modules that comprise the **SOSMobile** suite, has long been a mainstay for closing metered service orders in the field. But did you know that it can be used for so much more?

**SOSRemote** integrates to virtually any application that generates an order, such as locator services, work orders, outage and vegetation management systems, etc. Workers have access to all the information they need to close orders in the field. And access is controlled through easy-to-use wizards. Imagine the possibilities!

[Contact us](#) to find out how you can expand your automation with **SOSRemote**.



## Product Info Cont'd

### SOSMobile Integrates to Esri

SOSMobile clients are well aware that our products integrate to Google Maps. Dispatchers and field personnel have been assigning and viewing orders with that mapping application for years.



Did you know that SOSMobile can integrate to most any other mapping application including Esri?

We can overlay your Esri GIS map with work orders, service orders and truck locations, giving personnel a more complete picture of your entire infrastructure.

[Contact us](#) to find out how this might benefit your utility.

## Client News

### InsightAtlast Welcomes

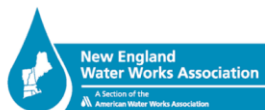


Groton Electric Light Department, a municipal utility owned by the residents of Groton, MA, will soon be discovering the advantages of field force automation.

They plan to use our *SOSRemote* and *SOSDispatch* modules to track, assign, complete and close all their field issues. They're particularly excited that their workers will be able to access inventory files in the field. Parts used by crews will be uploaded and automatically reflected in their inventory counts—a big help with inventory control.

## Out and About

InsightAtlast is pleased to join the members of New England Water Works Association (NEWWA).



It was a pleasure meeting everyone at the New Member Meet and Greet breakfast in December. We'll be in Booth 511 at the 2014 Spring Joint Regional Conference & Exhibition in Worcester, MA. Hope to see you there!



This year's CS Week conference is May 6-9 in San Antonio, Texas.

InsightAtlast will be in Booth 116. We hope you'll stop by to see all SOSMobile has to offer, and for a hands-on demonstration of *SOSRemote*.

### About InsightAtlast

*InsightAtlast has provided the Utility Industry with quality software and service since 1999. Our SOSMobile suite of software affordably automates a utility's entire mobile workforce and service order workflow. With intelligent scheduling, mobile dispatch and real-time updates, SOSMobile connects customer service with field operations using existing infrastructure and devices. Since its flexible modules can be tailored to suit any utility's unique mobile workforce, it's currently in use at a diverse array of client sites.*