

**In This Issue**

[Product Development](#)

[Client News](#)

[Employee News](#)

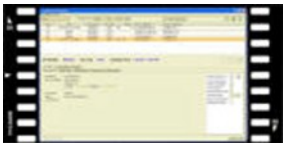
**AT A GLANCE**

**Product Literature**

Download our [Product Literature](#) for details on the entire **SOSMobile** suite of software.

**Video Demo**

See a video demo of **SOSMobile** on YouTube.



**Product Overview**

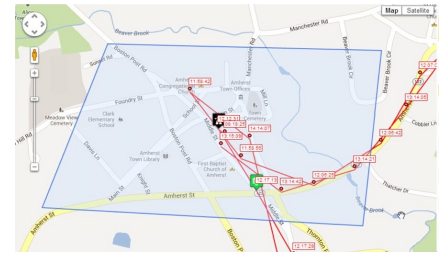
Check out our two minute **SOSMobile** commercial on YouTube.



**Product Development**

**SOSMobile Now Offers Geofencing Capabilities**

Automatic Vehicle Location (AVL) has long been a component of **SOSMobile**. Now we've enhanced it further by adding geofencing.



This capability allows users to establish geographic boundaries for their service trucks, and be alerted to perimeter violations in real-time or via historical reports.

Geofencing is a proven solution for increasing employee accountability and productivity. Please [contact us](#) for more information on how this could help your utility.

**Client News**

**Lee County Utilities**



InsightAtlast welcomes our latest **SOSMobile** client Lee County Utilities (LCU), headquartered in Fort Myers, FL. LCU is an award winning utility providing quality water and sewer service to a population of more than 255,000.

They've been closing service orders in the field with **SOSMobile** since June of this year.

## Client News Cont'd



### Vermont Gas Systems, Inc.

Vermont Gas, headquartered in South Burlington, VT, has chosen *SOSMobile's* entire suite of products to automate their service order process. Automation has become a high priority for them in light of a vast increase in their service territory.

A long-time user of our *SOSWeb* component for customer self-service, Vermont is excited about adopting our other applications. They particularly like our ability to offer a phased implementation. This makes for a smoother transition as employees are not immediately overwhelmed with entirely new processes. And we can work around busy times like college move-ins and light-up season. The first phase of implementation is scheduled for August.

## Employee News



InsightAtlast is pleased to announce a new addition to our growing team. **Sarah Glover**, Business Development Manager, brings a wealth of experience in assessing prospect needs and cultivating relationships. And, she has a great sense of humor.

You're sure to be hearing from Sarah in the coming weeks, and we are certain you'll enjoy the encounter.

### About InsightAtlast

*InsightAtlast has provided the Utility Industry with quality software and service since 1999. Our SOSMobile suite of software affordably automates a utility's entire mobile workforce and service order workflow. With intelligent scheduling, mobile dispatch and real-time updates, SOSMobile connects customer service with field operations using existing infrastructure and devices. Since its flexible modules can be tailored to suit any utility's unique mobile workforce, it's currently in use at a diverse array of client sites.*